

# Appendix D-1

**Weekly Real-Time Data Reports**

## Weekly Air Monitoring Summary

**Client:** PPG Industries

**Location:** Site 107: Fashionland Site - Jersey City, NJ

This weekly air monitoring report includes both tabular information and written discussions summarizing the ambient air quality data collected in accordance with the Air Monitoring Plan for the above-referenced project and reporting period. The following information is provided in the data summary:

- **Table 1:** Site-Specific Alarm Levels;
- **Table 2:** Weekly Real-Time PM<sub>10</sub> Data Summary;
- **Table 3:** Weekly Hand-Held Data Summary;
- **Table 4:** Weekly Elevated Readings Summary for PM<sub>10</sub>;
- **Table 5:** Program-to-Date Average Concentrations for Hexavalent Chromium, Total Dust, and Real-Time PM<sub>10</sub>;
- **Figure 1:** Meteorological Data; and
- **Figure 2:** Station Location Map.

This report covers real-time air monitoring from November 30 through December 6, 2020 at the Fashionland Site (Site). Real-time air monitoring is divided into three types of monitoring including; perimeter air monitoring (at the site boundaries), meteorological monitoring, and hand-held monitoring. The air monitoring report details results associated with the site, consisting of 5 stations and periodic hand-held monitoring. See Figure 2 for station locations.

### Perimeter air monitoring includes the following:

- Real-time 15-minute average PM<sub>10</sub> readings at each location during the work day;
- Periodic hand-held readings during remedial activities;
- Time integrated 8-to-10-hour Total Dust and Hexavalent Chromium laboratory sampling;
- Time integrated 24-hour Total Dust and Hexavalent Chromium laboratory sampling; and
- Meteorological measurements of 15-minute average wind speed, relative humidity, and temperature are recorded onsite at Air Monitoring Station 3.

### Summary of Real-Time Air Monitoring Results for PM<sub>10</sub> Concentrations

15-minute Time Weighted Average (TWA) PM<sub>10</sub> Site action levels are shown in Table 1. The maximum 15 minute TWA PM<sub>10</sub> readings are shown in Table 2. The maximum hand-held PM<sub>10</sub> concentrations are shown in Table 3. Elevated readings above the Site alarm levels are presented and explained in Table 4, if applicable.

### Summary of the Program-to-Date Integrated Sampling and Real-Time Air Monitoring Results

Integrated sampling results for hexavalent chromium (Cr<sup>+6</sup>) and total dust are updated when available. Program-to-date average concentrations for integrated Cr<sup>+6</sup>, total dust, and real-time PM<sub>10</sub> readings are shown in Table 5.

### Summary of Meteorological Monitoring

The time series plots of wind speed, temp, and relative humidity for the report period are shown in Figure 1.

Table 1: Site-Specific Action Levels

Alarm Levels	Alert Level (15 minute TWA)	Action Level (15 minute TWA)
PM <sub>10</sub>	255 µg/m <sup>3</sup>	339 µg/m <sup>3</sup>

Table 2: Weekly Real-Time PM<sub>10</sub> Data Summary

Maximum 15-Minute PM <sub>10</sub> TWA (Action Level: 339 µg/m <sup>3</sup> )				
Date	AMS 1	AMS 2	AMS 3	AMS 4
11/30/2020	40.9	120.0	44.3	36.7
12/1/2020	22.3	51.2	28.0	26.6
12/2/2020	6.5	8.4	9.3	13.6
12/3/2020	25.5	38.0	24.6	29.5
12/4/2020	23.9	26.1	27.4	27.1
12/5/2020	27.3	30.4	31.3	30.2
12/6/2020	3.2	6.0	5.3	10.0
Weekly Statistics				
Max	40.9	120.0	44.3	36.7
Average	9.7	12.2	12.7	12.0

Note: Highlighted cells indicate exceedance of the action level.

Table 3: Weekly Hand-Held Data Summary for PM<sub>10</sub> Concentration

Maximum Instantaneous Hand-Held PM <sub>10</sub> Concentration			
Date	PM <sub>10</sub> (µg/m <sup>3</sup> )	Time	Location
11/30/2020	36	11:00	AMS2
12/1/2020	20	9:00	AMS3
12/2/2020	15	13:00	AMS3
12/3/2020	22	10:00	AMS1
12/4/2020	24	8:00	AMS4

Table 4: Weekly Elevated Readings Summary

Location	Date	Time	Weather Conditions	Elevated Concentration	Explanation
N/A	N/A	N/A	N/A	N/A	N/A

Table 5: Program-to-Date Average Concentrations for Hexavalent Chromium, Total Dust, and Real-Time PM<sub>10</sub> Summary

Program-to-Date Averages (Cr <sup>+6</sup> & Total Dust Results from 11/30/20-12/4/20)				
	AMS 1	AMS 2	AMS 3	AMS 4
Cr <sup>+6</sup> Concentration (ng/m <sup>3</sup> )	6.1	6.2	2.7	4.7
Total Dust Concentration (µg/m <sup>3</sup> )	59.3	61.1	26.4	46.1
Real-Time PM <sub>10</sub> (µg/m <sup>3</sup> )	9.7	12.2	12.7	12.0

ng/m<sup>3</sup> - Nanograms per cubic meter

NA - Not Applicable

µg/m<sup>3</sup> - Micrograms per cubic meter

Figure 1: Meteorological Data

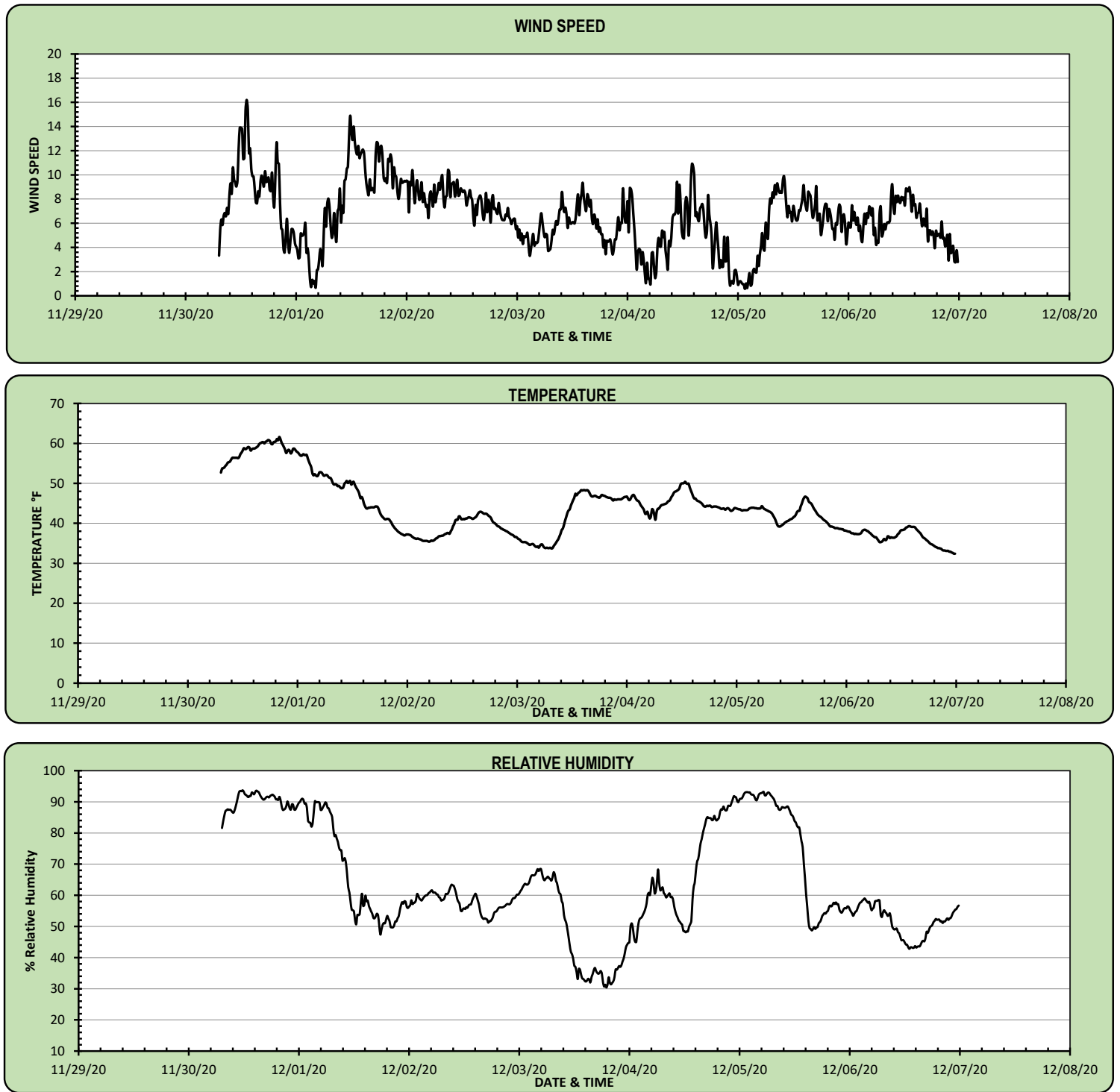


Figure 2: Station Location Map



## Weekly Air Monitoring Summary

**Client:** PPG Industries

**Location:** Site 107: Fashionland Site - Jersey City, NJ

This weekly air monitoring report includes both tabular information and written discussions summarizing the ambient air quality data collected in accordance with the Air Monitoring Plan for the above-referenced project and reporting period. The following information is provided in the data summary:

- **Table 1:** Site-Specific Alarm Levels;
- **Table 2:** Weekly Real-Time PM<sub>10</sub> Data Summary;
- **Table 3:** Weekly Hand-Held Data Summary;
- **Table 4:** Weekly Elevated Readings Summary for PM<sub>10</sub>;
- **Table 5:** Program-to-Date Average Concentrations for Hexavalent Chromium, Total Dust, and Real-Time PM<sub>10</sub>;
- **Figure 1:** Meteorological Data; and
- **Figure 2:** Station Location Map.

This report covers real-time air monitoring from December 7 through December 13, 2020 at the Fashionland Site (Site). Real-time air monitoring is divided into three types of monitoring including; perimeter air monitoring (at the site boundaries), meteorological monitoring, and hand-held monitoring. The air monitoring report details results associated with the site, consisting of 4 stations and periodic hand-held monitoring. See Figure 2 for station locations.

### Perimeter air monitoring includes the following:

- Real-time 15-minute average PM<sub>10</sub> readings at each location during the work day;
- Periodic hand-held readings during remedial activities;
- Time integrated 8-to-10-hour Total Dust and Hexavalent Chromium laboratory sampling;
- Time integrated 24-hour Total Dust and Hexavalent Chromium laboratory sampling; and
- Meteorological measurements of 15-minute average wind speed, relative humidity, and temperature are recorded onsite at Air Monitoring Station 3.

### Summary of Real-Time Air Monitoring Results for PM<sub>10</sub> Concentrations

15-minute Time Weighted Average (TWA) PM<sub>10</sub> Site action levels are shown in Table 1. The maximum 15 minute TWA PM<sub>10</sub> readings are shown in Table 2. The maximum hand-held PM<sub>10</sub> concentrations are shown in Table 3. Elevated readings above the Site alarm levels are presented and explained in Table 4, if applicable.

### Summary of the Program-to-Date Integrated Sampling and Real-Time Air Monitoring Results

Integrated sampling results for hexavalent chromium (Cr<sup>+6</sup>) and total dust are updated when available. Program-to-date average concentrations for integrated Cr<sup>+6</sup>, total dust, and real-time PM<sub>10</sub> readings are shown in Table 5.

### Summary of Meteorological Monitoring

The time series plots of wind speed, temp, and relative humidity for the report period are shown in Figure 1.

Table 1: Site-Specific Action Levels

Alarm Levels	Alert Level (15 minute TWA)	Action Level (15 minute TWA)
PM <sub>10</sub>	255 µg/m <sup>3</sup>	339 µg/m <sup>3</sup>

Table 2: Weekly Real-Time PM<sub>10</sub> Data Summary

Maximum 15-Minute PM <sub>10</sub> TWA (Action Level: 339 µg/m <sup>3</sup> )				
Date	AMS 1	AMS 2	AMS 3	AMS 4
12/7/2020	11.4	13.3	11.8	18.9
12/8/2020	7.6	11.0	7.2	14.9
12/9/2020	49.5	52.9	52.8	60.6
12/10/2020	51.1	54.5	54.3	62.6
12/11/2020	59.7	61.5	67.9	63.0
12/12/2020	144.9	136.3	134.3	116.6
12/13/2020	96.0	93.4	141.4	73.9
Weekly Statistics				
Max	144.9	136.3	141.4	116.6
Average	24.5	26.0	28.1	28.8

Note: Highlighted cells indicate exceedance of the action level.

Table 3: Weekly Hand-Held Data Summary for PM<sub>10</sub> Concentration

Maximum Instantaneous Hand-Held PM <sub>10</sub> Concentration			
Date	PM <sub>10</sub> (µg/m <sup>3</sup> )	Time	Location
12/7/2020	17	9:00	AMS3
12/8/2020	11	13:00	AMS2
12/9/2020	85	14:00	AMS2
12/10/2020	59	8:00	AMS2
12/11/2020	142	11:00	AMS3

Table 4: Weekly Elevated Readings Summary

Location	Date	Time	Weather Conditions	Elevated Concentration	Explanation
N/A	N/A	N/A	N/A	N/A	N/A

Table 5: Program-to-Date Average Concentrations for Hexavalent Chromium, Total Dust, and Real-Time PM<sub>10</sub> Summary

Program-to-Date Averages (Cr <sup>+6</sup> & Total Dust Results from 11/30/20-12/4/20)				
	AMS 1	AMS 2	AMS 3	AMS 4
Cr <sup>+6</sup> Concentration (ng/m <sup>3</sup> )	6.1	6.2	2.7	4.7
Total Dust Concentration (µg/m <sup>3</sup> )	59.3	61.1	26.4	46.1
Real-Time PM <sub>10</sub> (µg/m <sup>3</sup> )	17.3	19.3	20.5	20.6

ng/m<sup>3</sup> - Nanograms per cubic meter

NA - Not Applicable

µg/m<sup>3</sup> - Micrograms per cubic meter

Figure 1: Meteorological Data

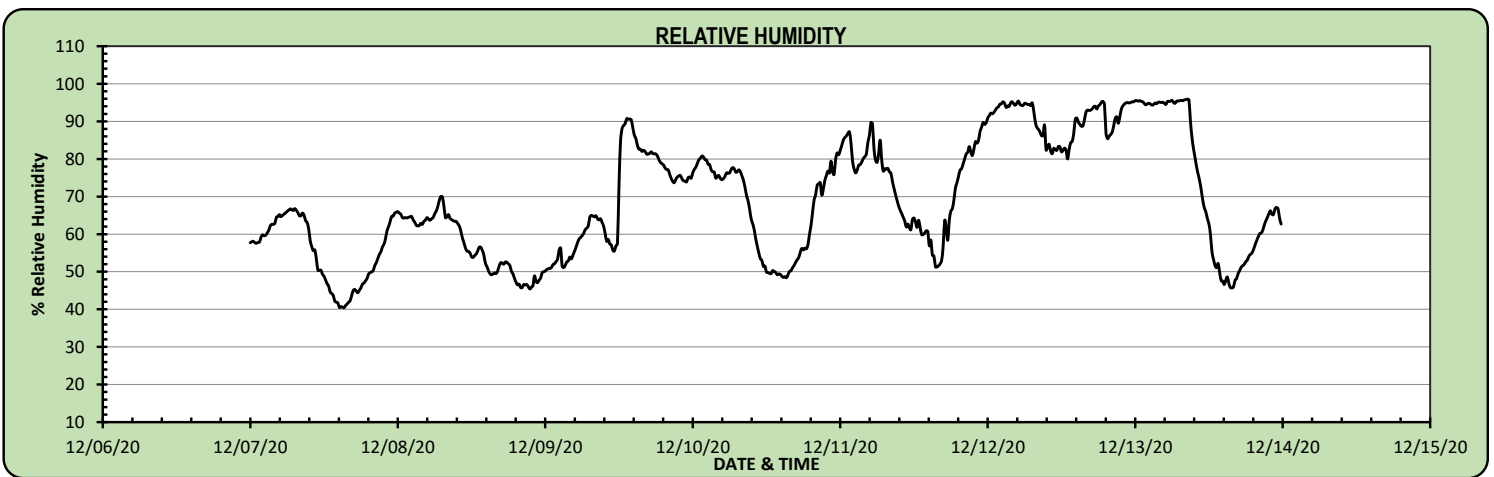
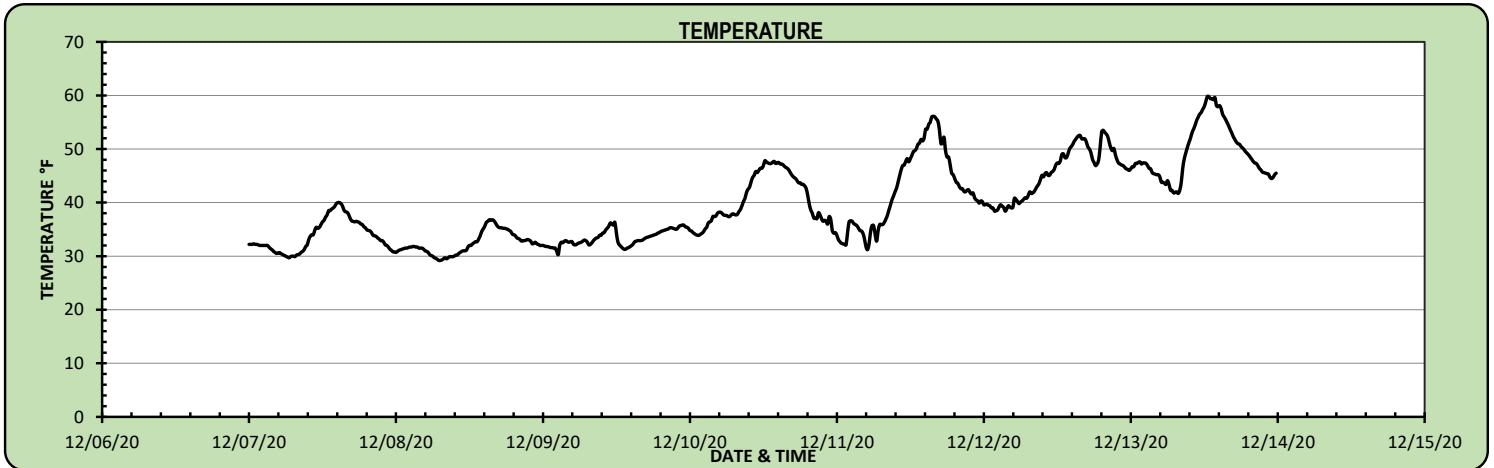
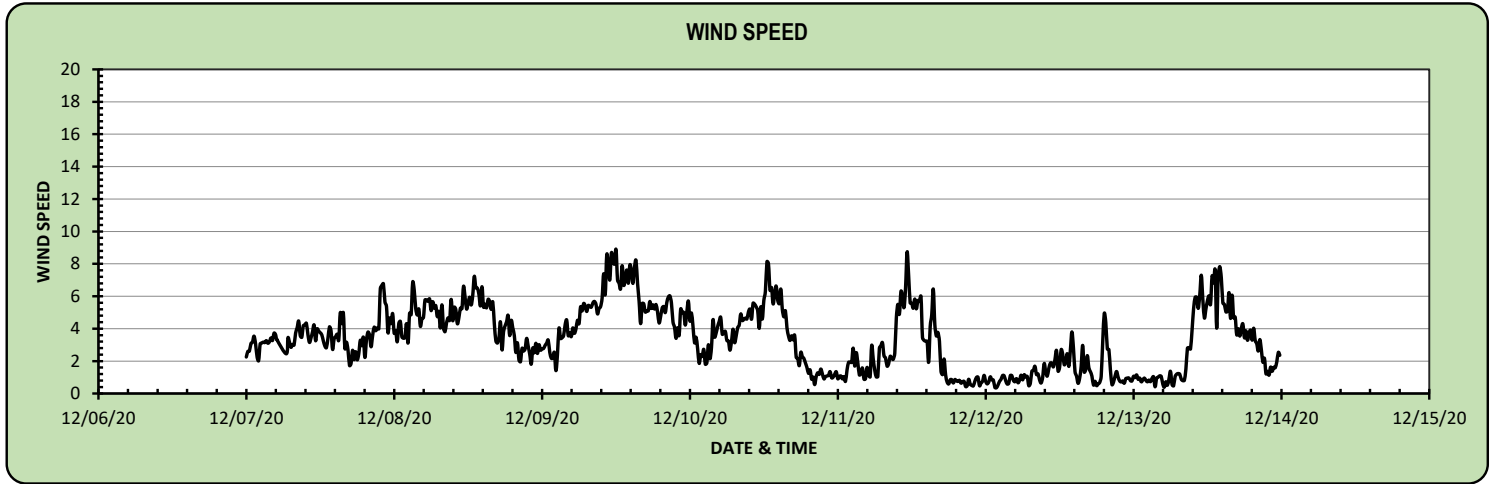




Figure 2: Station Location Map



## Weekly Air Monitoring Summary

**Client:** PPG Industries

**Location:** Site 107: Fashionland Site - Jersey City, NJ

This weekly air monitoring report includes both tabular information and written discussions summarizing the ambient air quality data collected in accordance with the Air Monitoring Plan for the above-referenced project and reporting period. The following information is provided in the data summary:

- **Table 1:** Site-Specific Alarm Levels;
- **Table 2:** Weekly Real-Time PM<sub>10</sub> Data Summary;
- **Table 3:** Weekly Hand-Held Data Summary;
- **Table 4:** Weekly Elevated Readings Summary for PM<sub>10</sub>;
- **Table 5:** Program-to-Date Average Concentrations for Hexavalent Chromium, Total Dust, and Real-Time PM<sub>10</sub>;
- **Figure 1:** Meteorological Data; and
- **Figure 2:** Station Location Map.

This report covers real-time air monitoring from December 14 through December 20, 2020 at the Fashionland Site (Site). Real-time air monitoring is divided into three types of monitoring including; perimeter air monitoring (at the site boundaries), meteorological monitoring, and hand-held monitoring. The air monitoring report details results associated with the site, consisting of 4 stations and periodic hand-held monitoring. See Figure 2 for station locations.

### Perimeter air monitoring includes the following:

- Real-time 15-minute average PM<sub>10</sub> readings at each location during the work day;
- Periodic hand-held readings during remedial activities;
- Time integrated 8-to-10-hour Total Dust and Hexavalent Chromium laboratory sampling;
- Time integrated 24-hour Total Dust and Hexavalent Chromium laboratory sampling; and
- Meteorological measurements of 15-minute average wind speed, relative humidity, and temperature are recorded onsite at Air Monitoring Station 3.

### Summary of Real-Time Air Monitoring Results for PM<sub>10</sub> Concentrations

15-minute Time Weighted Average (TWA) PM<sub>10</sub> Site action levels are shown in Table 1. The maximum 15 minute TWA PM<sub>10</sub> readings are shown in Table 2. The maximum hand-held PM<sub>10</sub> concentrations are shown in Table 3. Elevated readings above the Site alarm levels are presented and explained in Table 4, if applicable.

### Summary of the Program-to-Date Integrated Sampling and Real-Time Air Monitoring Results

Integrated sampling results for hexavalent chromium (Cr<sup>+6</sup>) and total dust are updated when available. Program-to-date average concentrations for integrated Cr<sup>+6</sup>, total dust, and real-time PM<sub>10</sub> readings are shown in Table 5.

### Summary of Meteorological Monitoring

The time series plots of wind speed, temp, and relative humidity for the report period are shown in Figure 1.

Table 1: Site-Specific Action Levels

Alarm Levels	Alert Level (15 minute TWA)	Action Level (15 minute TWA)
PM <sub>10</sub>	255 µg/m <sup>3</sup>	339 µg/m <sup>3</sup>

Table 2: Weekly Real-Time PM<sub>10</sub> Data Summary

Maximum 15-Minute PM <sub>10</sub> TWA (Action Level: 339 µg/m <sup>3</sup> )				
Date	AMS 1	AMS 2	AMS 3	AMS 4
12/14/2020	17.5	31.7	18.9	22.7
12/15/2020	8.7	8.6	9.7	15.2
12/16/2020	22.3	101.8	18.5	141.6
12/17/2020	29.5	55.6	8.0	19.2
12/18/2020	21.1	40.5	21.0	29.3
12/19/2020	40.7	56.5	40.5	42.0
12/20/2020	42.0	60.6	41.5	44.7
Weekly Statistics				
Max	42.0	101.8	41.5	141.6
Average	14.4	27.1	14.0	19.1

Note: Highlighted cells indicate exceedance of the action level.

Table 3: Weekly Hand-Held Data Summary for PM<sub>10</sub> Concentration

Maximum Instantaneous Hand-Held PM <sub>10</sub> Concentration			
Date	PM <sub>10</sub> (µg/m <sup>3</sup> )	Time	Location
12/14/2020	18	12:00	AMS4
12/15/2020	7	14:00	AMS3
12/16/2020	26	10:00	AMS4
12/17/2020	N/A	N/A	N/A
12/18/2020	7	9:00	AMS3

Note: Site closed on 12/17/20 due to snow. No monitoring conducted.

Table 4: Weekly Elevated Readings Summary

Location	Date	Time	Weather Conditions	Elevated Concentration	Explanation
N/A	N/A	N/A	N/A	N/A	N/A

Table 5: Program-to-Date Average Concentrations for Hexavalent Chromium, Total Dust, and Real-Time PM<sub>10</sub> Summary

Program-to-Date Averages (Cr <sup>+6</sup> & Total Dust Results from 11/30/20-12/4/20)				
	AMS 1	AMS 2	AMS 3	AMS 4
Cr <sup>+6</sup> Concentration (ng/m <sup>3</sup> )	6.1	6.2	2.7	4.7
Total Dust Concentration (µg/m <sup>3</sup> )	59.3	61.1	26.4	46.1
Real-Time PM <sub>10</sub> (µg/m <sup>3</sup> )	16.3	21.9	18.3	20.1

ng/m<sup>3</sup> - Nanograms per cubic meter

NA - Not Applicable

µg/m<sup>3</sup> - Micrograms per cubic meter

Figure 1: Meteorological Data

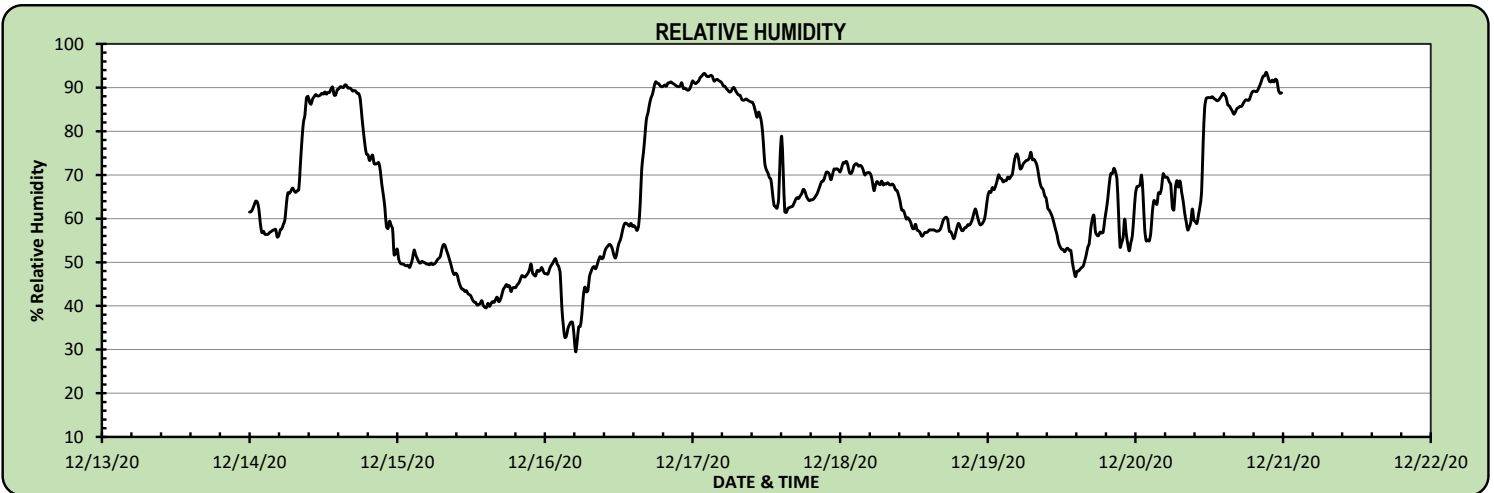
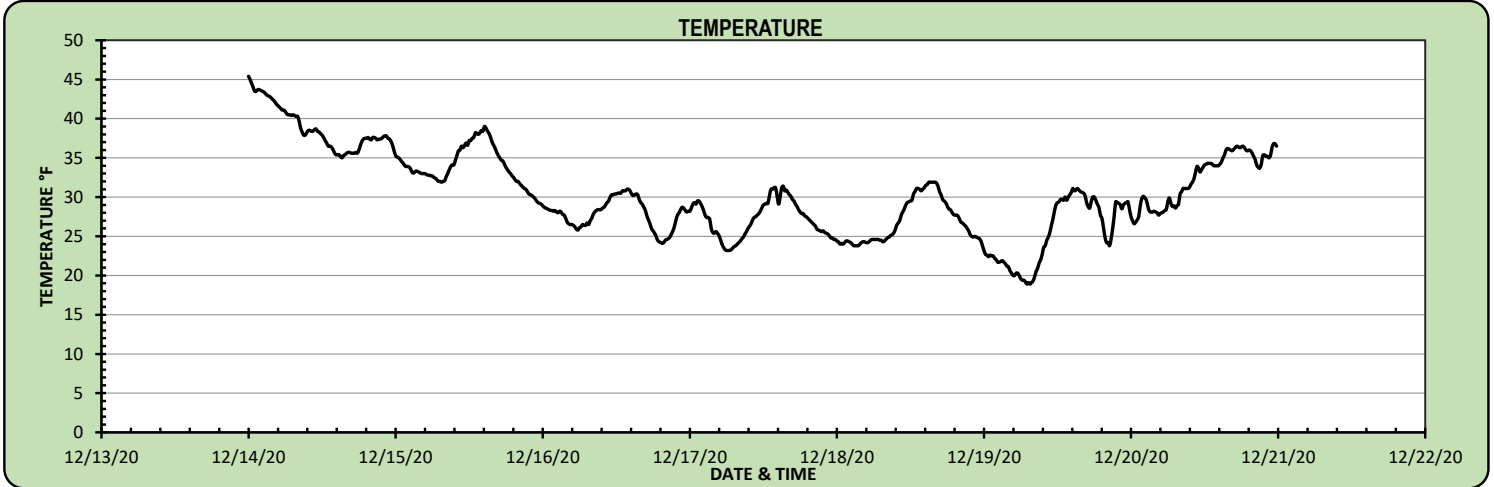
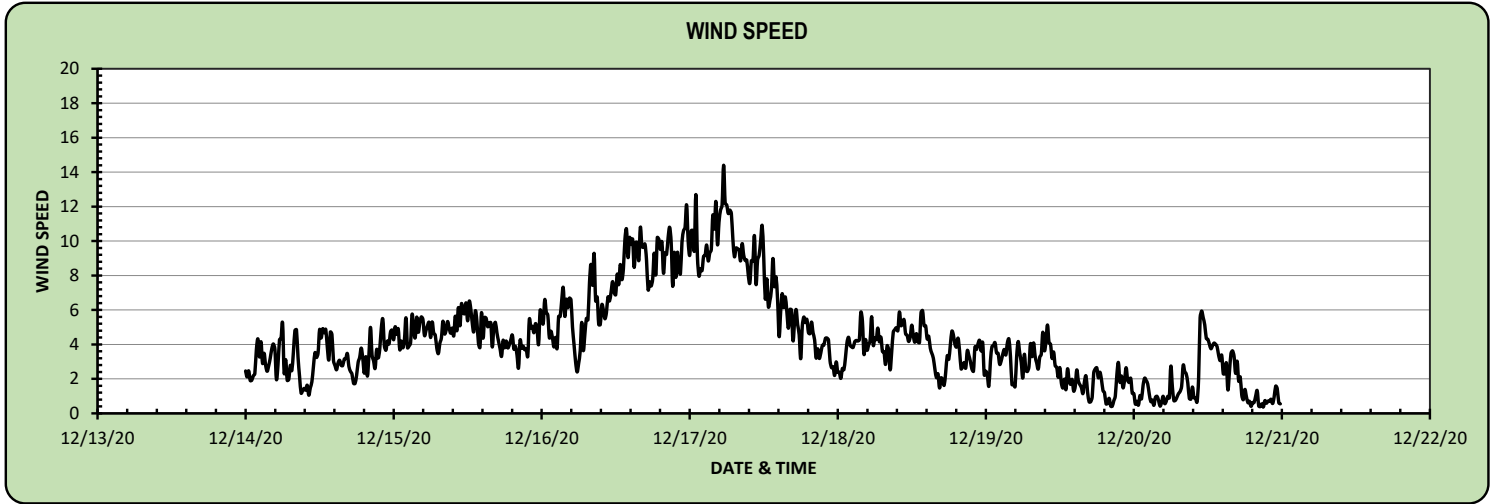


Figure 2: Station Location Map



## Weekly Air Monitoring Summary

**Client:** PPG Industries

**Location:** Site 107: Fashionland Site - Jersey City, NJ

This weekly air monitoring report includes both tabular information and written discussions summarizing the ambient air quality data collected in accordance with the Air Monitoring Plan for the above-referenced project and reporting period. The following information is provided in the data summary:

- **Table 1:** Site-Specific Alarm Levels;
- **Table 2:** Weekly Real-Time PM<sub>10</sub> Data Summary;
- **Table 3:** Weekly Hand-Held Data Summary;
- **Table 4:** Weekly Elevated Readings Summary for PM<sub>10</sub>;
- **Table 5:** Program-to-Date Average Concentrations for Hexavalent Chromium, Total Dust, and Real-Time PM<sub>10</sub>;
- **Figure 1:** Meteorological Data; and
- **Figure 2:** Station Location Map.

This report covers real-time air monitoring from February 8 through February 14, 2021 at the Fashionland Site (Site). Real-time air monitoring is divided into three types of monitoring including; perimeter air monitoring (at the site boundaries), meteorological monitoring, and hand-held monitoring. The air monitoring report details results associated with the site, consisting of 4 stations and periodic hand-held monitoring. See Figure 2 for station locations.

### Perimeter air monitoring includes the following:

- Real-time 15-minute average PM<sub>10</sub> readings at each location during the work day;
- Periodic hand-held readings during remedial activities;
- Time integrated 8-to-10-hour Total Dust and Hexavalent Chromium laboratory sampling;
- Time integrated 24-hour Total Dust and Hexavalent Chromium laboratory sampling; and
- Meteorological measurements of 15-minute average wind speed, relative humidity, and temperature are recorded onsite at Air Monitoring Station 3.

### Summary of Real-Time Air Monitoring Results for PM<sub>10</sub> Concentrations

15-minute Time Weighted Average (TWA) PM<sub>10</sub> Site action levels are shown in Table 1. The maximum 15 minute TWA PM<sub>10</sub> readings are shown in Table 2. The maximum hand-held PM<sub>10</sub> concentrations are shown in Table 3. Elevated readings above the Site alarm levels are presented and explained in Table 4, if applicable.

### Summary of the Program-to-Date Integrated Sampling and Real-Time Air Monitoring Results

Integrated sampling results for hexavalent chromium (Cr<sup>+6</sup>) and total dust are updated when available. Program-to-date average concentrations for integrated Cr<sup>+6</sup>, total dust, and real-time PM<sub>10</sub> readings are shown in Table 5.

### Summary of Meteorological Monitoring

The time series plots of wind speed, temp, and relative humidity for the report period are shown in Figure 1.

**Table 1: Site-Specific Action Levels**

Alarm Levels	Alert Level (15 minute TWA)	Action Level (15 minute TWA)
PM <sub>10</sub>	255 µg/m <sup>3</sup>	339 µg/m <sup>3</sup>

**Table 2: Weekly Real-Time PM<sub>10</sub> Data Summary**

Maximum 15-Minute PM <sub>10</sub> TWA (Action Level: 339 µg/m <sup>3</sup> )				
Date	AMS 1	AMS 2	AMS 3	AMS 4
2/8/2021	N/A	N/A	N/A	N/A
2/9/2021	N/A	N/A	N/A	N/A
2/10/2021	N/A	N/A	N/A	N/A
2/11/2021	N/A	N/A	N/A	N/A
2/12/2021	19.6	23.9	31.7	16.3
2/13/2021	24.0	40.0	28.3	22.2
2/14/2021	27.8	49.0	30.5	26.8
Weekly Statistics				
Max	27.8	49.0	31.7	26.8
Average	18.7	29.7	23.4	16.3

Note: Highlighted cells indicate exceedance of the action level. Monitoring resumed on 2/12/2021 to coincide with site activity.

**Table 3: Weekly Hand-Held Data Summary for PM<sub>10</sub> Concentration**

Maximum Instantaneous Hand-Held PM <sub>10</sub> Concentration			
Date	PM <sub>10</sub> (µg/m <sup>3</sup> )	Time	Location
2/8/2021	N/A	N/A	N/A
2/9/2021	N/A	N/A	N/A
2/10/2021	N/A	N/A	N/A
2/11/2021	N/A	N/A	N/A
2/12/2021	47	10:00	AMS3

Note: Monitoring resumed on 2/12/2021 to coincide with site activity.

**Table 4: Weekly Elevated Readings Summary**

Location	Date	Time	Weather Conditions	Elevated Concentration	Explanation
N/A	N/A	N/A	N/A	N/A	N/A

**Table 5: Program-to-Date Average Concentrations for Hexavalent Chromium, Total Dust, and Real-Time PM<sub>10</sub> Summary**

Program-to-Date Averages (Cr <sup>+6</sup> & Total Dust Results from 11/30/20-12/22/20)				
	AMS 1	AMS 2	AMS 3	AMS 4
Cr <sup>+6</sup> Concentration (ng/m <sup>3</sup> )	6.0	6.7	2.8	7.1
Total Dust Concentration (µg/m <sup>3</sup> )	58.9	62.3	24.9	58.4
Real-Time PM <sub>10</sub> (µg/m <sup>3</sup> )	19.1	26.0	21.3	22.1

ng/m<sup>3</sup> - Nanograms per cubic meter

NA - Not Applicable

µg/m<sup>3</sup> - Micrograms per cubic meter

Figure 1: Meteorological Data

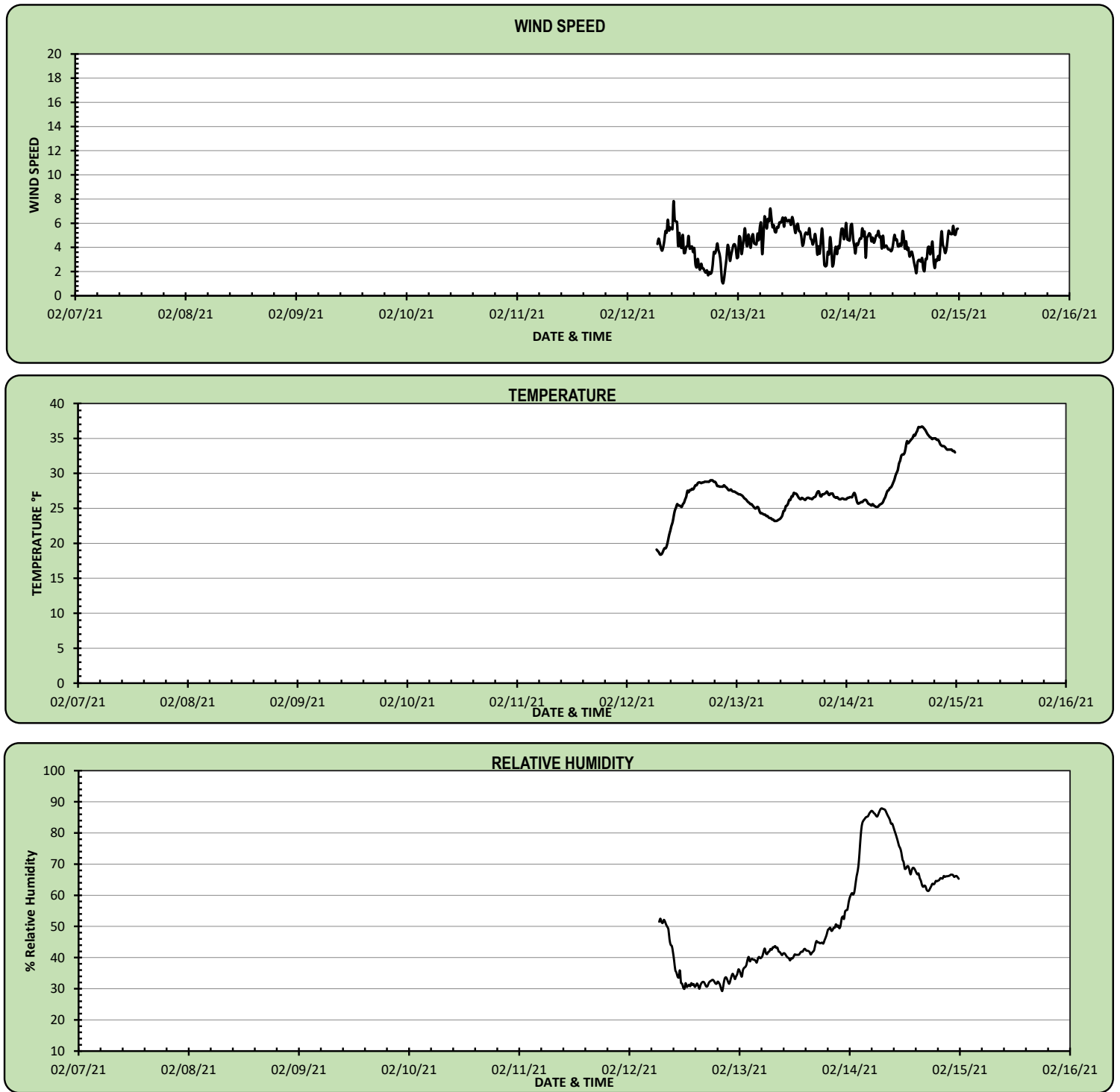




Figure 2: Station Location Map



## Weekly Air Monitoring Summary

**Client:** PPG Industries

**Location:** Site 107: Fashionland Site - Jersey City, NJ

This weekly air monitoring report includes both tabular information and written discussions summarizing the ambient air quality data collected in accordance with the Air Monitoring Plan for the above-referenced project and reporting period. The following information is provided in the data summary:

- **Table 1:** Site-Specific Alarm Levels;
- **Table 2:** Weekly Real-Time PM<sub>10</sub> Data Summary;
- **Table 3:** Weekly Hand-Held Data Summary;
- **Table 4:** Weekly Elevated Readings Summary for PM<sub>10</sub>;
- **Table 5:** Program-to-Date Average Concentrations for Hexavalent Chromium, Total Dust, and Real-Time PM<sub>10</sub>;
- **Figure 1:** Meteorological Data; and
- **Figure 2:** Station Location Map.

This report covers real-time air monitoring from February 15 through February 21, 2021 at the Fashionland Site (Site). Real-time air monitoring is divided into three types of monitoring including; perimeter air monitoring (at the site boundaries), meteorological monitoring, and hand-held monitoring. The air monitoring report details results associated with the site, consisting of 4 stations and periodic hand-held monitoring. See Figure 2 for station locations.

### Perimeter air monitoring includes the following:

- Real-time 15-minute average PM<sub>10</sub> readings at each location during the work day;
- Periodic hand-held readings during remedial activities;
- Time integrated 8-to-10-hour Total Dust and Hexavalent Chromium laboratory sampling;
- Time integrated 24-hour Total Dust and Hexavalent Chromium laboratory sampling; and
- Meteorological measurements of 15-minute average wind speed, relative humidity, and temperature are recorded onsite at Air Monitoring Station 3.

### Summary of Real-Time Air Monitoring Results for PM<sub>10</sub> Concentrations

15-minute Time Weighted Average (TWA) PM<sub>10</sub> Site action levels are shown in Table 1. The maximum 15 minute TWA PM<sub>10</sub> readings are shown in Table 2. The maximum hand-held PM<sub>10</sub> concentrations are shown in Table 3. Elevated readings above the Site alarm levels are presented and explained in Table 4, if applicable.

### Summary of the Program-to-Date Integrated Sampling and Real-Time Air Monitoring Results

Integrated sampling results for hexavalent chromium (Cr<sup>+6</sup>) and total dust are updated when available. Program-to-date average concentrations for integrated Cr<sup>+6</sup>, total dust, and real-time PM<sub>10</sub> readings are shown in Table 5.

### Summary of Meteorological Monitoring

The time series plots of wind speed, temp, and relative humidity for the report period are shown in Figure 1.

**Table 1: Site-Specific Action Levels**

Alarm Levels	Alert Level (15 minute TWA)	Action Level (15 minute TWA)
PM <sub>10</sub>	255 µg/m <sup>3</sup>	339 µg/m <sup>3</sup>

**Table 2: Weekly Real-Time PM<sub>10</sub> Data Summary**

Maximum 15-Minute PM <sub>10</sub> TWA (Action Level: 339 µg/m <sup>3</sup> )				
Date	AMS 1	AMS 2	AMS 3	AMS 4
2/15/2021	49.1	68.8	42.2	39.9
2/16/2021	46.8	59.0	33.5	54.0
2/17/2021	N/A	N/A	N/A	N/A
2/18/2021	N/A	N/A	N/A	N/A
2/19/2021	N/A	N/A	N/A	N/A
2/20/2021	N/A	N/A	N/A	N/A
2/21/2021	N/A	N/A	N/A	N/A
Weekly Statistics				
Max	49.1	68.8	42.2	54.0
Average	20.9	42.8	23.7	18.0

Note: Highlighted cells indicate exceedance of the action level. Monitoring discontinued after 2/16/21 due to completion of intrusive activities. Monitoring stations removed on 2/17/21.

**Table 3: Weekly Hand-Held Data Summary for PM<sub>10</sub> Concentration**

Maximum Instantaneous Hand-Held PM <sub>10</sub> Concentration			
Date	PM <sub>10</sub> (µg/m <sup>3</sup> )	Time	Location
2/15/2021	33	10:00	AMS4
2/16/2021	29	9:00	AMS3
2/17/2021	N/A	N/A	N/A
2/18/2021	N/A	N/A	N/A
2/19/2021	N/A	N/A	N/A

Note: Monitoring discontinued after 2/17/21 due to completion of intrusive activities. Monitoring stations removed on 2/17/21.

**Table 4: Weekly Elevated Readings Summary**

Location	Date	Time	Weather Conditions	Elevated Concentration	Explanation
N/A	N/A	N/A	N/A	N/A	N/A

**Table 5: Program-to-Date Average Concentrations for Hexavalent Chromium, Total Dust, and Real-Time PM<sub>10</sub> Summary**

Program-to-Date Averages (Cr <sup>+6</sup> & Total Dust Results from 11/30/20-2/16/21)				
	AMS 1	AMS 2	AMS 3	AMS 4
Cr <sup>+6</sup> Concentration (ng/m <sup>3</sup> )	5.8	6.4	2.6	6.7
Total Dust Concentration (µg/m <sup>3</sup> )	56.9	60.1	23.5	56.8
Real-Time PM <sub>10</sub> (µg/m <sup>3</sup> )	19.5	27.7	21.5	21.8

ng/m<sup>3</sup> - Nanograms per cubic meter

NA - Not Applicable

µg/m<sup>3</sup> - Micrograms per cubic meter

Figure 1: Meteorological Data

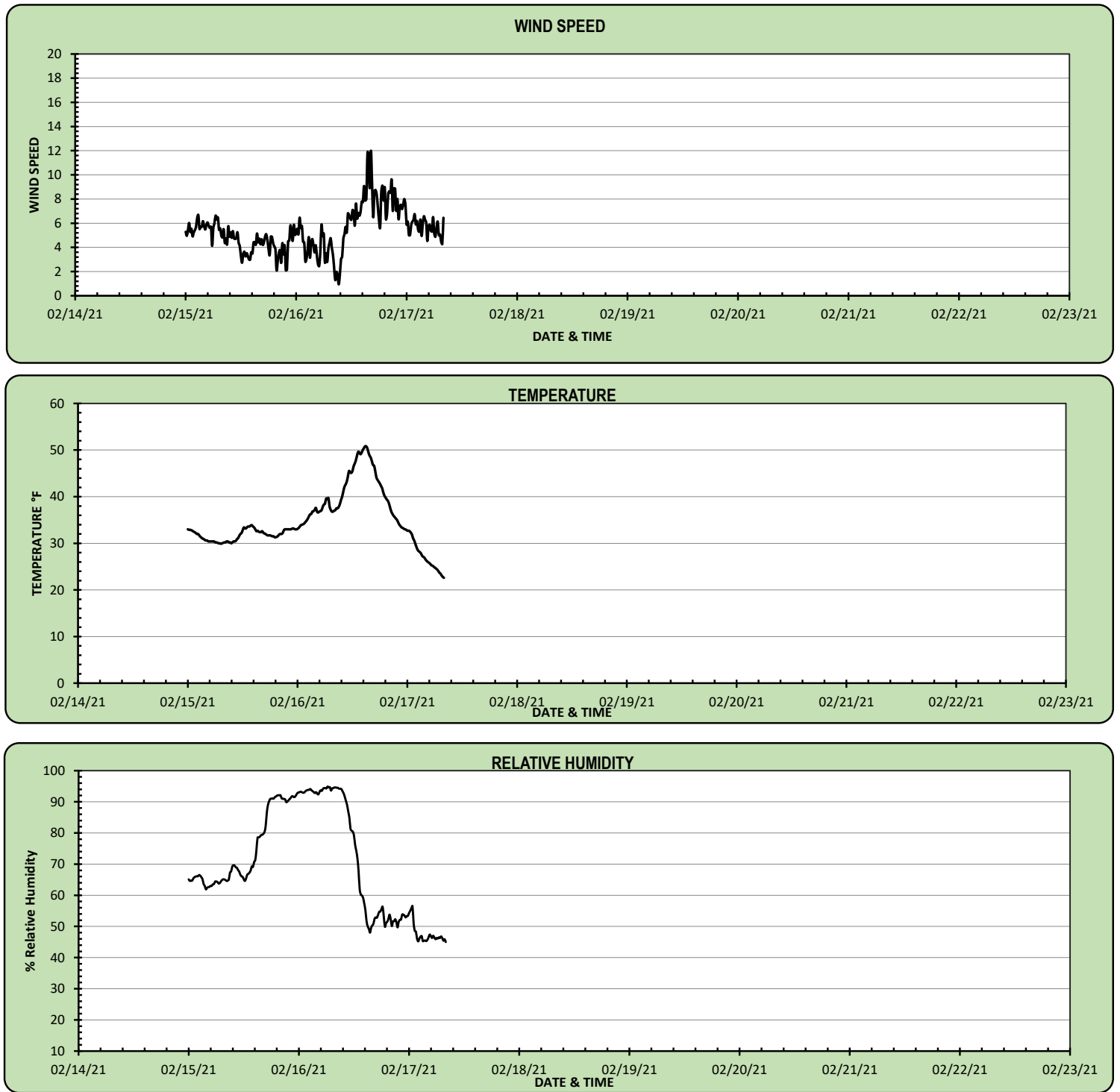


Figure 2: Station Location Map

